

\$399
AIRFARE

WHEN BOOKED BY
11/30/20

Jewels of the Rhine

Switzerland • France • Germany • the Netherlands

Departure Date: August 8, 2021

Jewels of the Rhine



Lucerne, Switzerland – set amongst a backdrop of the Alps



Strasbourg, France proudly boasts diverse architecture

DAY 1 Depart the USA: Today you'll depart the USA on your overnight flight to Zurich, Switzerland.

DAY 2 Zurich – Lucerne, Switzerland: Upon arrival in Zurich, transfer to your hotel in Lucerne to begin your Swiss adventure. The afternoon is at leisure to begin discovering your beautiful new surroundings. This evening, join your Mayflower representative and traveling companions for an included dinner at the hotel. **Meal: D**

DAY 3 Lucerne: After breakfast, an included walking tour highlights the city's landmark, the famous 14th-century Chapel Bridge with its paintings of heroic town events, that crosses the Reuss River. See the 17th-century Renaissance Town Hall and town squares, all set amongst the beautiful backdrop of the Swiss Alps. The remainder of the day is at leisure. **Meal: B**

DAY 4 Optional Excursion: Mt. Pilatus / Embark in Basel: Before departing for your ship in Basel, the day is free to enjoy at leisure or join the morning optional excursion to Mt. Pilatus – a mountain overlooking Lucerne that offers a unique alpine experience! This afternoon, travel by motorcoach to Basel, Switzerland for embarkation of your Emerald Waterways Star-Ship. This evening, join your fellow travelers for dinner onboard. **Meals: B, D**

DiscoverMORE: Mt. Pilatus (additional expense)

DAY 5 Breisach, Germany: Today you have a choice to visit a typical Black Forest Village, full of charm, cuckoo clocks and other German specialties or, take part in a guided hike along some of the Black Forest trails. **Meals: B, L, D**

EmeraldPLUS: Black Forest cake demonstration and tasting

EmeraldACTIVE: Guided hike in the Black Forest region

DAY 6 Strasbourg, France: Once docked in Kehl, coaches await to take you across the river to Strasbourg, the capital city of the Alsace Region in France. Your guided walking tour includes the Grande Île, the historical city center and UNESCO World Heritage Site. Known for its medieval black and white timber-framed buildings, old tanning houses, baroque sandstone buildings, canals and river locks, the city's star attraction is the cathedral, dominating the main square.

Meals: B, L, D

DiscoverMORE: Tour to Riquewihr (additional expense)

DAY 7 Mannheim – Heidelberg, Germany: Enjoy the morning cruising to Mannheim, located at the confluence of the Rhine and Neckar Rivers. Travel by coach to Heidelberg for a wine tasting, visit to the ruins of Heidelberg Castle and walking tour of the city center. Alternatively, take part in an active hike to Heidelberg Hill. **Meals: B, L, D**

EmeraldACTIVE: Hike from Mount Königstuhl to Heidelberg

DAY 8 Koblenz: Cruise to the 2,000-year-old city of Koblenz and enjoy a walking tour through the heart of the city. Stroll down cobblestone streets as you pass historic and picturesque sites. Visit the German monument at the confluence of the Rhine and Moselle Rivers, and enjoy idyllic panoramic views of the Rhine from Ehrenbreitstein Fortress. **Meals: B, L, D**

DiscoverMORE: Moselle & Cochem (Reichsburg) Castle Visit (additional expense)



Relax during a glass-top canal cruise through Amsterdam

DAY 9 Cologne: Cruise along the Rhine River to Cologne. Founded by the Romans, the city is one of Germany's oldest and is famous for its magnificent World-Heritage listed Gothic cathedral. Join your local guide for an included walking tour of the city as you learn how the air raids of WWII turned its streets into a blank canvas. The tour concludes at the cathedral, whose twin spires dominate the skyline. This evening, back onboard, join your Captain for a farewell reception and dinner.

Meals: B, L, D

DiscoverMORE: Visit to Eau de Cologne Museum (additional expense)

DAY 10 Amsterdam, the Netherlands: This morning, relax during a glass-top canal boat cruise through Amsterdam's canal system, viewing the medieval center of the city. Alternatively, if you are feeling more active, embark on a guided bike tour to Waterland. Return to the ship in the afternoon to explore the city of Amsterdam at your leisure.

Meals: B, L, D

EmeraldACTIVE: A guided bike tour to Waterland

DAY 11 Amsterdam / USA: Bid farewell to Europe and return home with memories of life enriching experiences from your European adventure and cruise along the Rhine River. **Meal:** B

Itinerary is subject to change.

CRUISE AND HOTEL ACCOMMODATIONS

Days 2 and 3 – Hotel Europe or similar, Lucerne, Switzerland

Days 4 through 10 – Aboard an Emerald Waterways Star-Ship

Post-cruise hotel stays available in Amsterdam. Call for details.



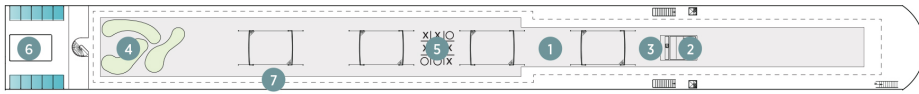
Exceptional Inclusions

- **23 Meals:** 9 breakfasts, 6 lunches and 8 dinners
- **Airport transfers** on tour dates when air is provided by Mayflower Cruises & Tours
- Visit **four countries**
- Two-night **hotel stay and touring in Lucerne**
- **Seven-nights in a suite or stateroom** of your choice onboard the vessel
- All **gratuities included**
- **First-class service** by an English-speaking crew
- **Shore excursions** with English-speaking local guides
- Personal **listening device** for shore excursions
- Visit **UNESCO World Heritage Sites**
- **All meals included** onboard with a variety of **international cuisine**
- Complimentary **regional wines, beer and soft drinks** with onboard lunches and dinners
- **Onboard Activity Manager** will support all EmeraldACTIVE excursions and host daily onboard wellness activities, games, classes and evening entertainment
- Complimentary **bottled water** in your stateroom
- Complimentary **WiFi onboard**
- Complimentary **bicycles onboard** for use ashore
- All port charges included
- \$55 in **Mayflower Money**

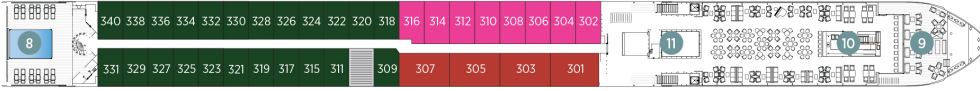
Emerald Waterways Star-Ships

Built: 2014-20 **Speed:** 15.5 mph **Staterooms:** 19 **Suites:** 72 **Length:** 443 ft. **Crew:** 47

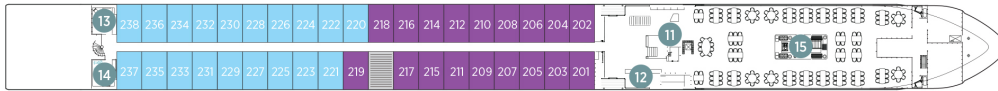
SUN DECK



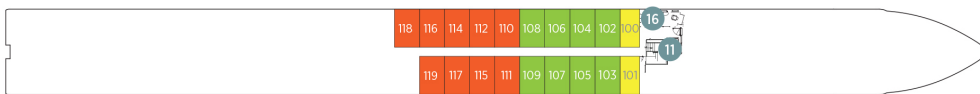
HORIZON DECK



VISTA DECK

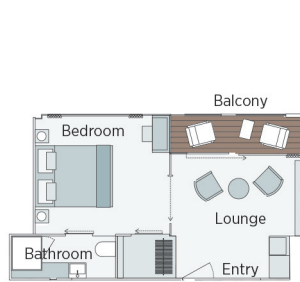


RIVIERA DECK



Public Areas and Ship Amenities

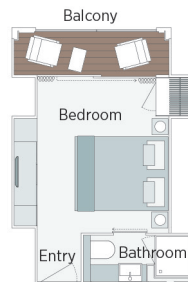
- 1 Sun Deck with Deck Chairs
- 2 Navigation Bridge
- 3 Sky Barbecue
- 4 Golf Putting Green
- 5 Games Area
- 6 Retractable Glass Roof
- 7 Walking Track
- 8 Daytime Pool & Bar / Evening Cinema
- 9 The Terrace
- 10 Horizon Bar and Lounge
- 11 Elevator
- 12 Reception
- 13 Wellness Area
- 14 Fitness Area
- 15 Reflections Restaurant
- 16 Hairdresser



Owner's One-Bedroom Suite

315ft²

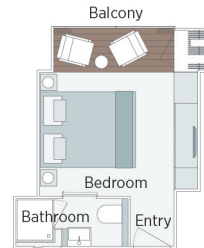
CAT SA



Grand Balcony Suite

210ft²

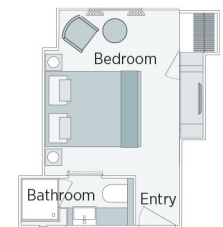
CAT S



Panorama Balcony Suite

180ft²

CAT A CAT B CAT C



Emerald Stateroom

162ft²

CAT D CAT E

2021 Departure Date
Jewels of the Rhine

			AUGUST 8	
CAT	STATEROOM / SUITE	DECK	PER PERSON TWIN	SINGLE ROOM ADD
E	Emerald Stateroom	Riviera	\$4,798	+\$2,895
D	Emerald Stateroom	Riviera	\$4,898	+\$2,925
C	Panorama Balcony Suite	Vista	\$5,448	+\$3,279
B	Panorama Balcony Suite	Vista	\$5,698	+\$3,449
A	Panorama Balcony Suite	Horizon	\$5,898	+\$3,579
S	Grand Balcony Suite	Horizon	\$6,298	N/A
SA	Owner's One-Bedroom Suite	Horizon	\$7,098	N/A

Price includes \$399 airfare from Louisville when booked by November 30, 2020

Travelers Protection Plan (TPP) for River Cruises - \$450 per person

This nonrefundable fee will provide a refund to you during the instance that you have to cancel your trip. The cancellation has to be for a covered reason (see Plan for details on coverage) and we have to be notified at least one day prior to departure. If you must leave the tour early due to personal illness or the illness or death of an immediate family member, TPP will provide a refund for any unused services after the departure of the tour. Other benefits include medical expenses for illness and injury, emergency transportation, 24 hour hot line and lost or stolen baggage assistance. Return air transportation is included ONLY if your air tickets are purchased through Mayflower Cruises & Tours. Please review the Plan for details on coverage. Should you choose not to purchase our TPP, the following per person cancellation charges will be assessed for all tours and optional excursion costs:

- 91 days or more prior to departure: Deposit Amount
- 90 days to day of departure: 100% of total tour
- No refund on unused portions of the tour

Exclusions: Mayflower Cruises & Tours reserves the right to alter its Refund and Cancellation Policy when a substantial amount of cancellation or postponement of travel is attributable to: conditions resulting from an act of God, natural or man-made disaster, fire, government action, civil disorder, war, hostilities between nations, or unavailability of transportation through no fault of Mayflower Cruises & Tours. *Plan and benefits offered and administered by Trip Mate, Inc.*

TOUR ACTIVITY LEVEL
1 2 3 4 5
EASY ENERGETIC



FOR RESERVATIONS OR INFORMATION CONTACT:

Koinonia Travels and Tours
270-304-9062

roger@koinoniatravelsandtours.com